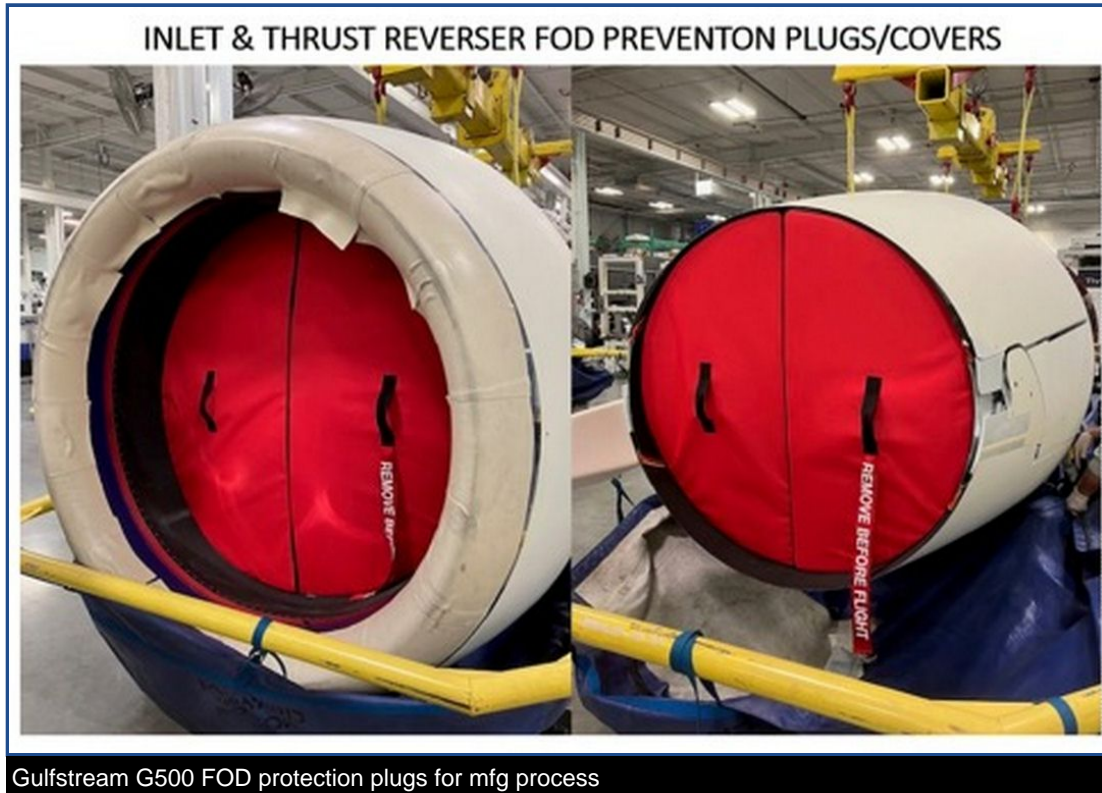


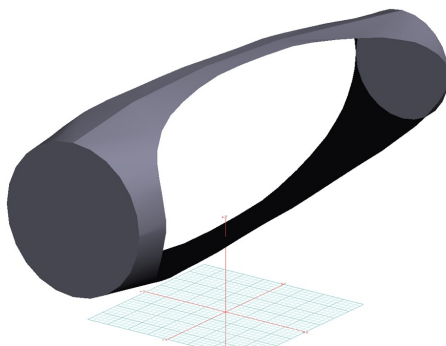
Tech Sheet: Gulfstream Aerospace Gulfstream GVII (G400, G500, G600, G700, G800)

(gulfstream-aerospace-G7.pdf)



Section 2: Engine Covers

The **Gulfstream Aerospace Gulfstream GVII (G400, G500, G600, G700, G800) Bikini Style Engine Covers** are a single-piece design using a soft and smooth stretchy fabric. The cover stretches tightly over both the intake and exhaust, installing quickly and easily. These covers are designed to be used as hangar dust covers and have a useful life of approximately one year.



Gulfstream G550 Engine Covers, Bikini Type (3D Model)



Grumman Gulfstream G-IV SP Engine Cover, bikini type

| Description | Part Number | Price |
|---|---------------|-----------------|
| ENGINE COVERS, Hangar Use, Bikini Type (set of 2) | G7-135 | \$905.00 |

Section 3: Plugs & Protection

Gulfstream Aerospace Gulfstream GVII (G400, G500, G600, G700, G800) Heat Resistant Pitot Tube Covers are made of Naugahyde vinyl, and lined with a non-burning material. They are designed to cover the entire pitot assembly, slipping over the tube and tightening around the base with a Velcro strap detail. A "Remove Before Flight" streamer is attached to the cover. **Heat Resistant Pitot Covers** are an upgrade to our standard design, and help prevent the pitot cover from melting onto the tube if the pitot heat is accidentally turned on while installed. If you want the set tethered together, please let us know.

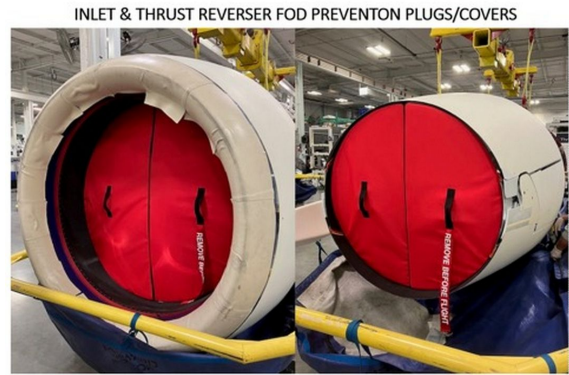
Gulfstream Aerospace Gulfstream GVII (G400, G500, G600, G700, G800) Pitot Tube Covers NOT HEAT RESISTANT TYPE, are made of Naugahyde vinyl, and are designed to cover the entire pitot assembly. Slipping over the tube, the cover tightens around the base with a Velcro strap detail. A "Remove Before Flight" streamer is attached to the cover. **Heat Resistant Pitot Covers** are an upgrade to this design, and help prevent the pitot cover from melting onto the tube if the pitot heat is accidentally turned on while installed. If you want the set tethered together, please let us know.

The **Engine Exhaust Plugs** are custom fit for your Gulfstream Aerospace Gulfstream GVII (G400, G500, G600, G700, G800) exhaust openings, made with heavy-duty vinyl material, and stuffed with a single block of sculpted urethane foam. Each plug has a zipper that allows the foam to be removed and dried if necessary. Exhaust plugs have 'remove before flight' streamers sewn onto the face of the plugs. Most plugs are imprinted with the aircraft registration number in black for an extra charge. Exhaust plugs may be inserted soon after flight when the engine is still warm. Engine Inlet Plugs are commonly referred to as Cowl Plugs, Intake Plugs, Cowl Blocks, Engine Blocks, and Engine Bungs.

The **Engine Inlet Plugs** are custom fit for your Gulfstream Aerospace Gulfstream GVII (G400, G500, G600, G700, G800) intakes, made with heavy-duty vinyl material, and stuffed with a single block of sculpted urethane foam. Each plug has a zipper that allows the foam to be removed and dried if necessary. Engine plugs have 'remove before flight' streamers sewn onto the face of the plugs. Most plugs are imprinted with the aircraft registration number in black for an extra charge. Storage bag NOT included. Engine plugs may be inserted after flight when the engine is still warm. Engine Inlet Plugs are commonly referred to as Cowl Plugs, Intake Plugs, Cowl Blocks, Engine Blocks, and Engine Bungs.



Global Express Exhaust Plugs



Gulfstream G500 FOD protection plugs for mfg process

| Description | Part Number | Price |
|--|---------------|------------------|
| INTAKE PLUGS, folding type (G500/G600, PW814GA and PW815GA Series) (set of 2) | G7-100 | \$2365.00 |
| INTAKE PLUGS, folding type (G400, PW812GA Series) (set of 2) | G7-101 | \$2140.00 |
| INTAKE COVERS (set of 2) | G7-110 | \$2075.00 |
| EXHAUST PLUGS, folding type (G500/G600, PW814GA and PW815GA Series) (set of 2) | G7-120 | \$1380.00 |
| EXHAUST PLUGS, folding type (G400, PW812GA Series) (set of 2) | G7-121 | \$1220.00 |

| | | |
|---|---------------|-----------------|
| PITOT PROBES/TAT/ICE DETECTOR SET, heat resistant type (set of 8) | G7-210 | \$545.00 |
| ICE DETECTOR COVERS (set of 2) | G7-215 | \$150.00 |

Section 5: HeatShields & Sun Reflectors

Cockpit Heatshields are interior sunshades for the aircraft's cockpit. The product is a unique composite of closed-cell foam with a silver mylar finish. The semi-rigid design is stiff enough to stand inside the window framing. The set folds up flat and is easily stored in the included storage sleeve. Some designs may require velcro and suction cups. Our Heatshields for jets are offered white side out because some aircraft manufacturers have issued advisories against reflective window inserts due to potential heat damage. A Heatshield is an excellent short-term remedy for cockpit overheating, but an external fabric cover is more effective for long-term protection.



Gulfstream Cockpit Heatshields



Gulfstream Cockpit Heatshields

| Description | Part Number | Price |
|--|---------------|-----------------|
| COCKPIT HEATSHIELDS (GIIV-G400, G500, G600) (set of 4) | G7-900 | \$455.00 |
| COCKPIT HEATSHIELDS (GIIV-G650, G700, G800) (set of 4) | G7-905 | \$455.00 |

Prices subject to change. Other Covers and Design Alterations: Prices on request.

Prices are FOB Morgan Hill, CA. Sales tax on orders shipped to California addresses. Orders take approximately 3 weeks to complete. For domestic orders we normally ship by UPS ground service. Next day shipping and air parcel post is available on request. We can take payment by Visa, Mastercard, American Express, or Discover.

Bruce's Custom Covers offers protective covers and plugs for virtually every type of airplane, jet and helicopter. If you have questions about our products please call any time TOLL FREE: 800/777-6405, or FAX: 408/738-2729.



A division of Aircraft Covers, Inc.

18850 Adams Ct.
Morgan Hill, CA 95037
www.AircraftCovers.com

Aircraft Cover Ordering Form

| | |
|---------------|--|
| Customer Info | Name _____ Shipping Address _____ _____ Phone & Email _____ |
| Payment | Credit Card Number <input type="text"/> <input type="text"/> <input type="text"/> <input type="text"/> <input type="text"/> <input type="text"/> <input type="text"/> <input type="text"/> <input type="text"/> <input type="text"/> <input type="text"/> <input type="text"/> <input type="text"/> <input type="text"/> <input type="text"/> <input type="text"/> <input type="text"/> Exp. Date <input type="text"/> <input type="text"/> / <input type="text"/> <input type="text"/> V-Code* <input type="text"/> <input type="text"/> <input type="text"/> <input type="text"/> <small>*Visa, Mastercard, Discover: last 3 numbers on back of card, right of signature. Amex: 4 smaller numbers printed on face of card.</small> |
| A/C Info | Reg / Tail Number: _____ Aircraft Type: _____ Year: _____ Colors / Paint Scheme (be specific): _____ |

Please specify below the items you would like to order.
See technical sheet or visit our website for part numbers (or just fill in the description)

| | Part Number | Quant | Description | Price |
|----|-------------|-------|-------------|-------|
| 1 | | | | |
| 2 | | | | |
| 3 | | | | |
| 4 | | | | |
| 5 | | | | |
| 6 | | | | |
| 7 | | | | |
| 8 | | | | |
| 9 | | | | |
| 10 | | | | |

Optional Items (check the box of the item you want)

Imprint aircraft registration number onto both sides of canopy cover.....\$35.00

Imprint aircraft registration number onto jet intake covers.....\$55.00

TOTAL